

**New!**

Works outdoors  
UV Degradation Protection  
No Cover Needed  
Water Resistance  
Sharp & Vibrant Images



# MCS-TOUCH-15.4

*New MCS-TOUCH Capacitive Touch Screen  
replaces the MCS-TOUCH-15.4 Resistive Touch  
Input Method: Finger, Stylus or \*Glove*



5580 Enterprise Pkwy., Fort Myers, FL 33905  
Office: (239) 694-0089 Fax: (239) 694-0031  
[www.mcscontrols.com](http://www.mcscontrols.com)

\* The glove needs to have a conductive fabric or material to work with cap touchscreens.

# Precision Monitoring with MCS-TOUCH-15.4

**New!**

Works outdoors  
UV Degradation Protection  
No Cover Needed  
Water Resistant  
Sharp & Vibrant Images



Exceptional Optics - 1280x800 Resolution

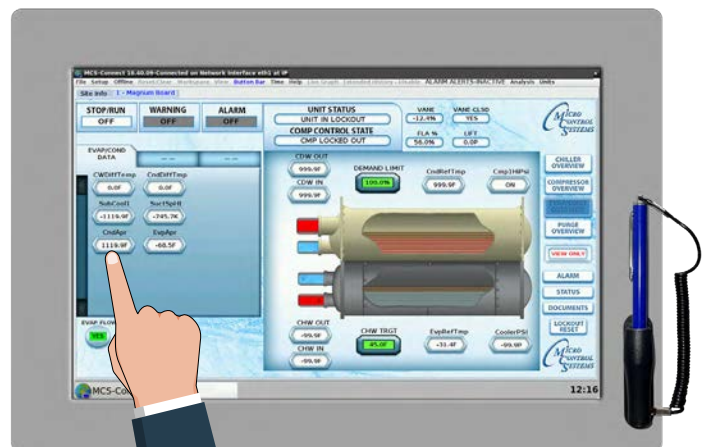
**Sharp and vibrant images**

*Input Method: Finger, Stylus or \*Glove*

- **Highly accurate and does not require calibration - easy to clean - glass surface.**
- **Same format as MCS-TOUCH-15.4 resistive touchscreen, *drops in same cutout.***
- **New - Linux operating system, *supports cap touchscreen and old resistive touch screens.***
- Works outdoors, bright screen, **water resistance.**
- Faster than resistive touchscreens.
- Operating Temperature -22°F to 176°F (-30°C to +80°C).
- Operating Humidity - 90 %RH (Non Condensing).
- The MCS-TOUCH-15.4 comes preloaded with the MCS-CONNECT program that allows you to view the 'unit's status', 'extended history', 'alerts', 'alarms', setpoints, and more, all in a user friendly graphic format.

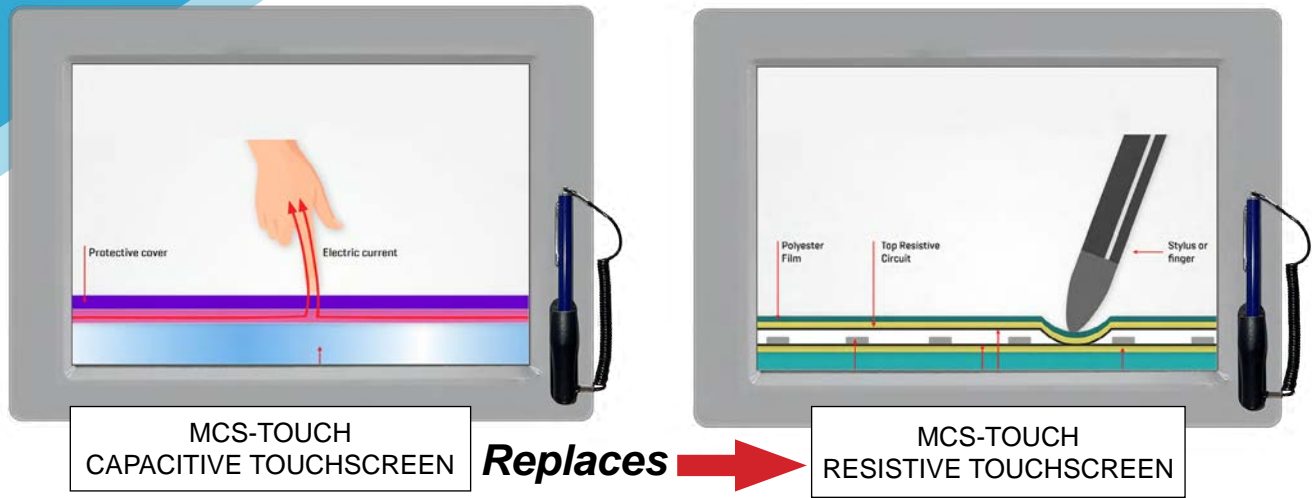
- *Key chiller operating parameters are easily viewed and displayed on a single display screen for quick evaluation and decision making.*

**Input Method: Finger, Stylus or \*Glove**



\* The glove needs to have a conductive fabric or material to work with cap touchscreens.

# MCS-TOUCH - Capacitive vs Resistive



Capacitive touch screens are control displays that utilize the electrical properties of the human body as input. When a finger (or stylus) comes in contact with the display it detects when and where on the display the user touches it, whereas resistive touchscreens are pressure-activated as shown above.

## COMPARISON (Capacitive vs Resistive Touch Screens)

	<b>MCS-TOUCH CAPACITIVE SCREEN</b>	<b>MCS-TOUCH RESISTIVE SCREEN</b>
Sensitivity to touch	More sensitive, can sense proximity of finger or stylus	Less sensitive, Requires pressure on the touchscreen
Visibility - Contrast, sharpness, brighter	Good visibility even in sunlight	Sometimes poor contrast due to multiple layers
Frequently touched areas	Not prone to dead zones regardless of frequency of use	Dead zones can appear in frequently used areas
Rain, water resistant	Reduced accuracy until the water is removed	Resistive touchscreen is perfect solution on a construction site where water or debris might land on the screen
Glass Cleaners	Yes*	No
CALIBRATION	NOT NEEDED	Calibration is needed, requires many steps
Durability	Best- keeps working even if glass is cracked	Good - resistive screens can stop working if glass is cracked
Scratch Resistance	Good	More easily scratched or damaged.
UV Degradation Protection	Good	Less protection.

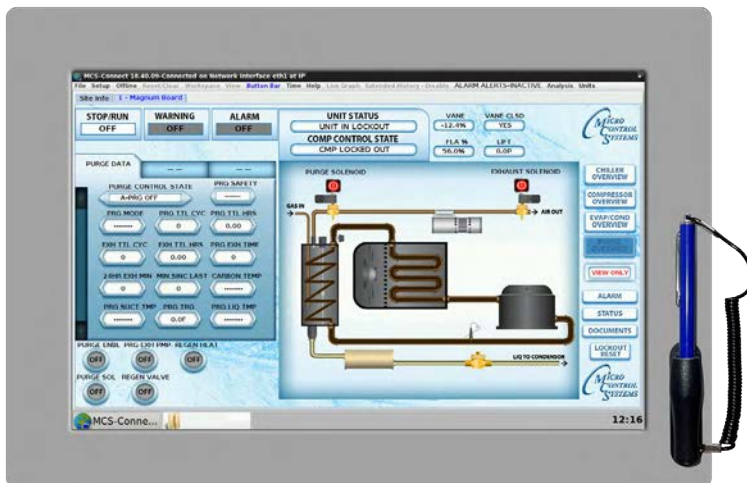
\*PCAP screens can be cleaned with available products such as Klear Screen or Glass Plus. Use a soft lint-free cloth, such as a microfiber cloth. Allow the surface to dry.

# MCS-CONNECT and your Touchscreen

MCS-CONNECT is installed on every MCS-TOUCHSCREEN. Its purpose is to provide both local and remote communication for MCS Micro Controllers either by themselves or as part of a network.

MCS-CONNECT permits the user to monitor the status of the Micro Controller in real time, and with proper authorization, changes can be made to the system. In as fast as 10 seconds, configuration files can be transmitted to, or received from a MCS Micro Controller.

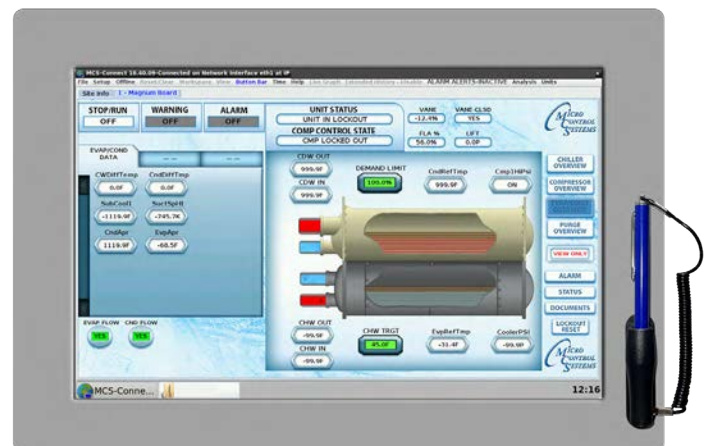
Another powerful feature of MCS-CONNECT is its ability to graph event history. Since MCS controllers automatically perform history logging, the user can select which inputs or outputs to graph, and view the results either in REAL TIME or over a user selectable period of time.



*MCS-TOUCHSCREENS come standard with custom display screens allowing users to acknowledge alarms, change set points, and force points on selected screens. Transitioning from screen to screen is fast and easy by tapping the touch screen or using the stylus on the touchscreen.*

## PERFORMANCE MANAGEMENT

*The MCS-TOUCHSCREEN display continuously captures data and provides trending capability for power and chiller performance, and chilled and condenser water parameters for precise energy management.*





# MCS-TOUCH-15.4 - *Capacitive Touch . . .*

**replaces the MCS-TOUCH-15.4 Resistive Touch**

**New!**

Works outdoors  
UV Degradation Protection  
No Cover Needed  
Water Resistant  
Sharp & Vibrant Images



## Specifications

Dimensions.....	17"L x 12.11"W x 3.228"H
Mounting	
Door Mount .....	15.75"L x 10.875" cutout 10 mount studs thru customers encl. HT800 Cellular Silicone Gasket NEMA 4 IP66 rated Indoor or outdoor (Mounted in Nema4 Enclosure)
VESA Mount .....	75 x 75 mm; 100 x 100 mm (indoor only)
LCD Screen.....	15.4" (16:10 Diagonal) 16.2 Million Colors 1280x800 Resolution View Angle 70°U, 70°D, 70°L, 70°R Capacitive Stylus pen White LED Backlight (Min Life 50,000 Hrs) Luminance Min. 350 Min. 450 Typical
Touchscreen Surface.....	UV Degradation Protection
Operating Temperature .....	-22°F to 176°F (-30°C to +80°C)
Operating Humidity.....	90 %RH (Non Condensing)
Storage Temperature .....	-22°F to 176°F (-30°C to +80°C)
Power Input .....	12VDC regulated
Motherboard-Rev 4.0.....	Freescale i.MX6 Dual Core 800mhz 2Gb of 512mhz DDR3 RAM memory 16Gb of eMMC Flash memory 10m/100m/1G Ethernet 1 Micro-SD Slots 1 USB On-The-Go (OTG) 2 USB Host 2.0 Real Time Clock (RTC) w/ Battery 3 RS485 communication ports (max. baud rate 115k) Mini PCIe Interface

MCS-CENTRIFUGAL  
15.4" Touchscreen  
mounted in Enclosure

MCS-MAGNUM-MLB-15.4  
15.4" Touchscreen mounted  
in Enclosure



MCS-MAGNUM-15.4  
Touchscreen and MCS-MAGNUM

MCS-MAGNUM-NEMA4-15.4  
15.4" Touchscreen mounted in  
Nema4 Enclosure



MCS-TOUCH-15.4 with  
Vesa Mount optional arm

# Remote Communicating . . .

1

**MAGNUM**  
IP ADDRESS 192.168.18.101



OPTIONAL  
Daisy chain to  
other Magnums

MCS-Ethernet  
Crossover Cable



**TOUCHSCREEN**  
IP ADDRESS 192.168.18.151

2

**RS-485 MAGNUM**  
**ADDRESS #1**



OPTIONAL  
Daisy chain to  
other Magnums

RS-485 Serial Connection  
Hardwired from MCS Controller  
to MCS-Touchscreen



3

**MAGNUM**  
**IP ADDRESS**  
**192.168.18.101**



**MAGNUM**  
**IP ADDRESS**  
**192.168.18.102**



**MAGNUM**  
**IPADDRESS**  
**192.168.18.103**



Ethernet  
Port

**MCS-Ethernet**  
**Switch**



**MCS-Ethernet-Cable**



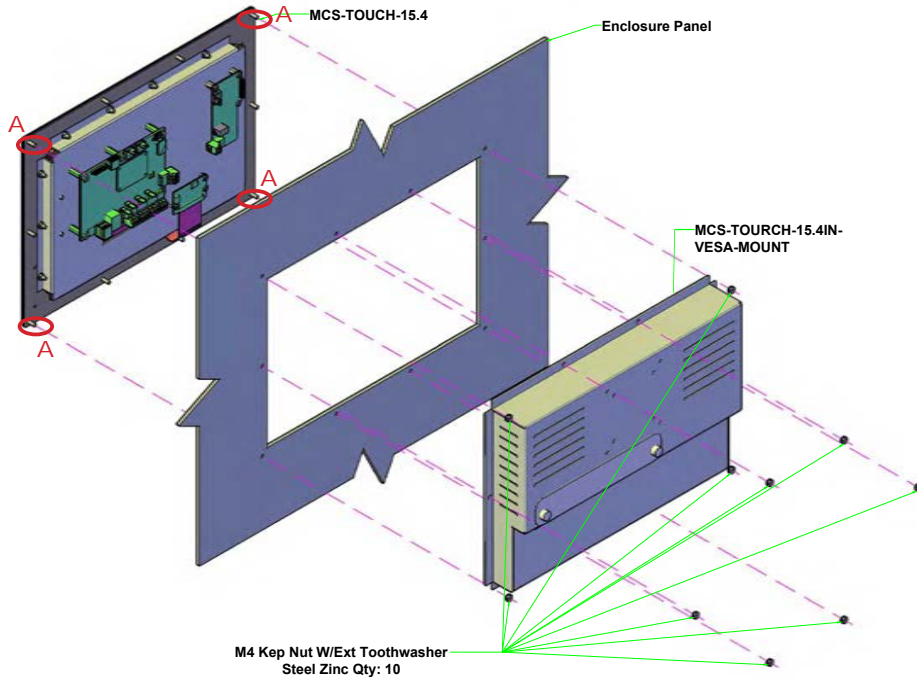
**MCS-TOUCHSCREEN**  
**IP ADDRESS**  
**192.168.18.151**

## Local Ethernet Communication

Local area network (LAN), group of computers that are connected together in a localized area.



# MCS-TOUCH-15.4 CUSTOMER INSTALLATION



1. Remove all nuts from back of the touchscreen (10).
2. Separate the face of the touchscreen from the Vesa Mount back.
3. **Lay the template (printed sheet supplied) on your enclosure**, mark area for the cutout, 15.75 x 10.875 (40.05 x 27.6225cm).
4. Mark the 10 holes to drill.
5. Drill bit size - 3/16in (5mm).
6. Cut out the hole for the touchscreen.
7. Place the Touchscreen Face Plate through the cutout and secure the **"4" corner 'A' nuts** to the enclosure.
8. Place the Vesa-Mount back onto the face plate studs, secure the remaining 8 nuts, making sure you do not over tighten the nuts. Tightening each nut around the frame, so the gasket is not pinched. **Torque value 1 lbf.in**



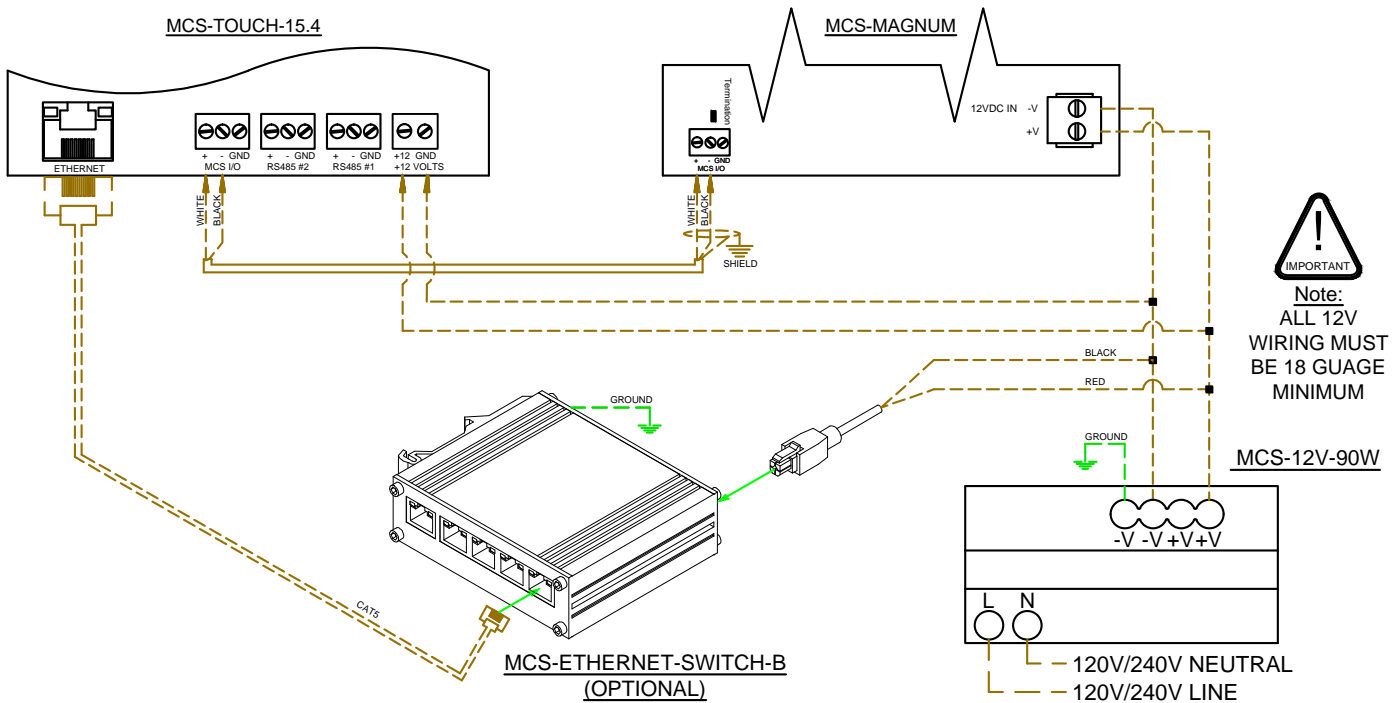
Click or scan with phone for information to mounting

November 13, 2024 10:57 AM



## MCS-TOUCH-15.4 Customer Installation Wiring

Wiring Diagram







***Leading manufacturer of products that excel in:  
Efficiency, Reliability, Serviceability, and Innovation  
for the HVAC/R Industry***

Comprehensive product range encompassing Controls, Compressors, VFD, EXVS, Heat Exchangers, and Sensors

▶ Global market position with unmatched Serviceability

▶ Customer Focused Collaborative Credible

▶ One stop solution for control of all different types and brands of units

▶ Superior service, delivery, and unrivaled technical expertise

***Always a path to upgrade and never obsolete!***

5580 Enterprise Pkwy., Fort Myers, FL 33905 ♦ Office: (239) 694-0089 ♦ Fax: (239) 694-0031

**[www.mcsccontrols.com](http://www.mcsccontrols.com)**